

JELD WEN.

INTERNAL  
DOORSET  
TECHNICAL  
BROCHURE





#### WHY CHOOSE THIS PRODUCT?

An internal doorset solution to save time and cost of installation

## INTERNAL DOORSETS

Our timber internal doorsets are designed specifically for internal applications and is a cost-effective solution for fitting a door and lining as quickly and easily as possible. Internal doorsets are available as single doorset or as pair\*, in a wide variety of door styles including FD30 & FD60 fire rated options.

Supplied as a pre-assembled set with hinges, choice of latch, door linings and door stop, the internal doorset is a smart solution to save time, reduce cost and ensure quality on your next project. Single doorsets can be supplied right or left hand hung as per your requirements.

#### PRODUCT FEATURES:

- Choose from a wide range of designs including popular moulded, paint grade premium or laminate finishes.
- Door linings are manufactured using moisture resistant MDF and finished in a white foil wrap which gives a perfect finish for final decoration on site. Architraves and doorstops are also supplied to the same finish and are fully machined and packed with the doorset.
- The door stop groove in the lining facilitates the concealed screw-fixing of the lining to the structural opening.

- Fixing brackets are pre-fitted to the side of the linings for ease of installation and a solid reliable fixing system through the lining into the structural opening.
- Fire doorsets are available with either a 30-minute fire rating (FD30), supplied with MDF linings, or a 60-minute fire rating (FD60) which are supplied in hardwood door frames. Available with standard intumescent strips or both intumescent and smoke seals fitted to the head and jambs of the lining or door frame.

\*Doorset pairs are supplied unassembled for ease of handling.



All fire doorsets are independently tested and certified





## STANDARD SPECIFICATION

### 1 HINGES

Three 100mm grade 10 hinges in bright nickel, satin, matt black or matt brass finishes. In softwood and hardwood frames.

### 2 LATCH OR BATH LATCH

65mm tubular latch or 65mm bath latch – in bright polished steel.

### 3 LINING

25mm MDF foil wrapped linings in a choice of depths:

77mm / 90mm / 95mm / 100mm / 115mm / 120mm  
125mm / 130mm / 140mm / 150mm

### 4 DOOR STOPS

Either 27mm or 71mm according to the lining depth. (supplied loose)

For a full list of hardware options,  
see page 26

## FIRE DOORSET SPECIFICATION

As standard specification but modified for fire performance requirements:

### 1 INTUMESCENT STRIP

Supplied with an FD30 or FD60 fire rating.

### 2 HINGES

FD30 rated doorsets three 100mm grade 10 hinges – in bright nickel finish.

FD60 rated doorsets three 100mm grade 13 hinges – in bright nickel finish.

### 3 LINING & FRAME

FD30 MDF foil wrapped lining in a choice of depths:

77mm / 90mm / 95mm / 100mm / 115mm / 120mm  
125mm / 130mm / 140mm / 150mm

FD60 hardwood frame with an 87mm depth

### 4 DOOR DESIGN

For FD30 ratings, choose from a Moulded, paint grade premium or laminate design.

For FD60 ratings, choose from a Moulded, paint grade premium or laminate design.

### 5 DOOR DATA PIN





**WHY CHOOSE THIS PRODUCT?**  
 The ideal doorset for communal and service areas

# COMMUNAL DOORSETS

## COMMUNAL DOORSETS

The pre-assembled communal doorset has been specifically developed for cross corridor, lobby and day-to-day access areas.

Fire rated to FD30 or FD60 and available in a wide range of finishes and glazing options, includes popular Moulded, paint grade premium and laminate designs.

### PRODUCT FEATURES:

- Pre-primed FD30 softwood door frames and unfinished FD60 door frames in hardwood ready for decoration on site. Pre-fitted with intumescent and smoke seals as standard.
- Available with pre-mitred architraves in a range of designs.
- A wide range of optional hardware is available including door closers, push and pull handles, and kick plates. See page 27 for details.

## RISER DOORSETS

To complement the communal doorset range, JELD-WEN can also supply riser doorsets to conceal and hide services.

They are supplied as a pre-assembled set complete with hinges, MDF door linings and door stop.

### PRODUCT FEATURES:

- Door linings are manufactured using moisture resistant MDF and finished in a white foil wrap which gives a perfect finish for final decoration on site. Architraves and doorstops are supplied to the same finish as the linings and are fully machined and packed with the doorset.
- A number of hardware options are available including fire brigade lock and sash lock. See page 27 for details.



All fire doorsets are independently tested and certified



## COMMUNAL STANDARD SPECIFICATION

- 1 HINGES**  
Three 100mm grade 13 hinges – in bright nickel.
- 2 DOOR FRAME**  
FD30 pre primed softwood frame with fixed stop.  
  
FD60 unfinished hardwood frame with fixed stop.
- 3 INTUMESCENT AND SMOKE SEAL**  
Pre installed within frame.
- 4 DOOR DESIGN**  
Choose a Moulded, Paint grade premium, (FD30 only) or laminate finish.

## RISER STANDARD SPECIFICATION

- 1 HINGES**  
Three 100mm grade 10 hinges – in bright nickel finish.
- 2 DOOR FRAME**  
25mm MDF foil wrapped linings in a choice of depths:  
  
77mm / 90mm / 95mm / 100mm/ 115mm / 120mm  
  
125mm / 130mm / 140mm / 150mm
- 3 INTUMESCENT AND SMOKE SEAL**  
Pre installed within frame.
- 4 DOOR DESIGN**  
Choose a Moulded, Paint grade premium, (FD30 only) or laminate finish.
- 5 DOOR DATA PIN**

For a full list of hardware options, see page 27





**WHY CHOOSE THIS PRODUCT?**  
 A third party, dual certified doorset for fire and security rated applications

## FLAT ENTRANCE DOORSETS

Flat entrance doorsets meet the requirements of Secured by Design. This is achieved through third party dual certification for fire, smoke and security performance, giving you confidence that our doorsets conform to building regulations.

Available in popular Moulded, paint grade premium and laminate finishes, these doors can be matched to other JELD-WEN doorsets within the property to offer a co-ordinated and high-quality look throughout.

### PRODUCT FEATURES:

- FD30 door frames are manufactured using primed softwood, unfinished ready for final decoration on site. Available with intumescent strips and smoke seals fitted to the head and jambs of the door frame, supplied in either white or brown.
- All flat entrance doorsets are supplied as standard with a high quality multi-point lock, handle and cylinder, hinges, security chain, door viewer and drop down seal.
- A range of optional hardware is also available including letter plates, security chain, door knocker, kick plates and

numerals. An additional DDA compliant viewer is also available if required. See page 28 for details.

- Our flat entrance doorsets can also help achieve energy efficiency standards on a project with *U* values as low as 2.0 on the FD30 moulded and flush door types.



All SecureFIT™ doorsets are independently tested and certified through the BWF Certifire and Certisecure schemes



Meets the requirements of PAS 24 and Secured By Design



## STANDARD SPECIFICATION

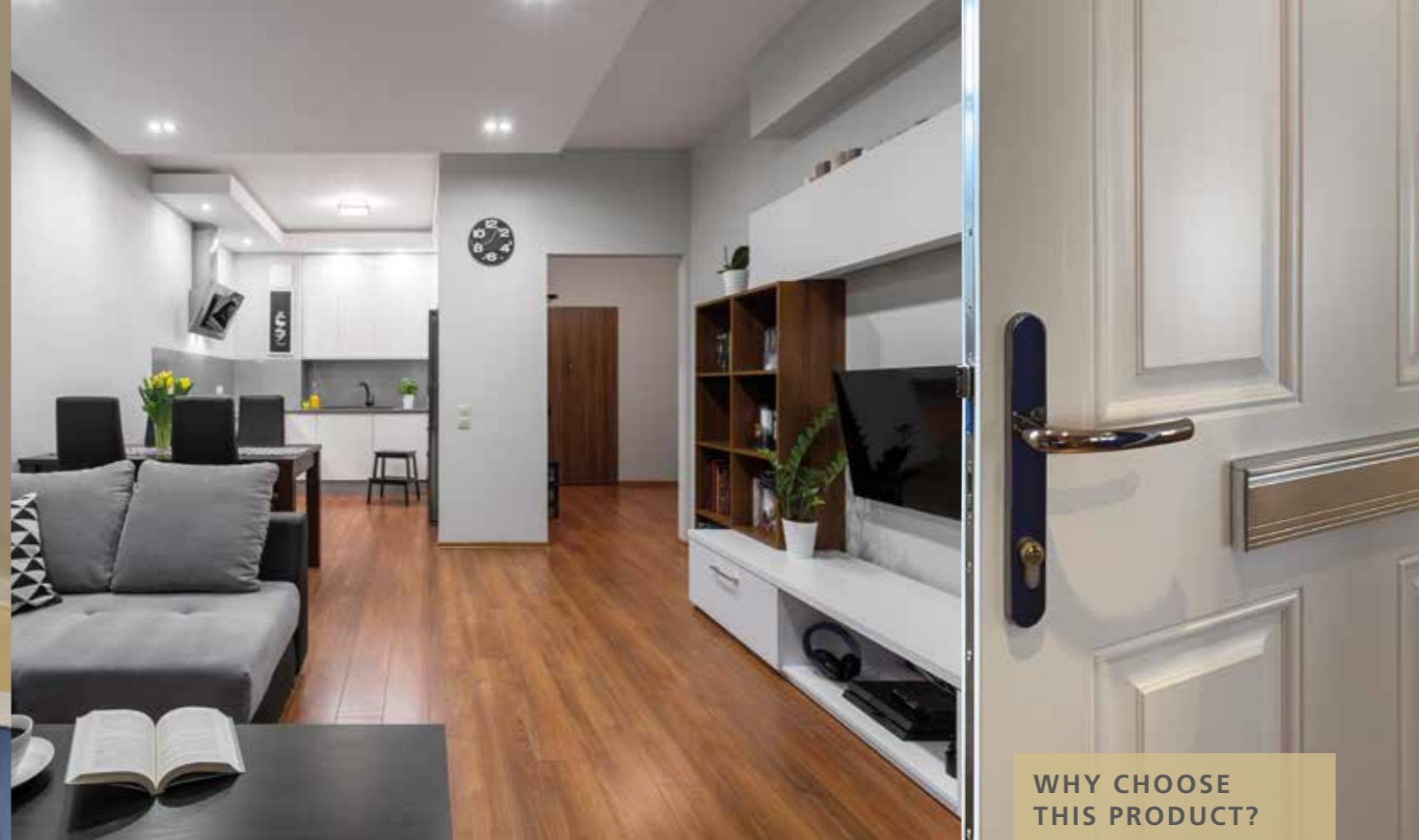


- 1 VIEWER**  
Silver wide angled door viewer.
- 2 MULTI-POINT LOCK**
- 3 HANDLE**  
Lever handle in satin silver or chrome.
- 4 HINGES**  
Supplied with three satin silver or chrome grade 13 hinges.
- 5 DROP DOWN SEAL**  
Concealed automatic drop down seal.
- 6 INTUMESCENT & ACOUSTIC SEALS**  
Fire, smoke and acoustic seals pre-installed into the frame.
- 7 DOOR DESIGN**  
Choose a Moulded, Paint grade premium or laminate finish.
- 8 SECURITY CHAIN**  
(on inside of doorset).
- 9 ALUMINIUM THRESHOLD PLATE**  
(FD30 only).
- 10 DOOR DATA PIN**

For a full list of hardware options, see page 28







**WHY CHOOSE THIS PRODUCT?**

A dual certified interior doorset solution with glazing and colour options

# FLAT ENTRANCE DOORSET WITH OPTIONAL TOP AND SIDE LIGHTS

We offer flat entrance doorsets with optional top and side light tailored to provide the perfect solution for both new and refurbishment applications. Available in a wide range of standard and made to measure sizes, with the flexibility to include side and top lights. These doorsets meet the requirements of Secured by Design. This is achieved through third party dual certification for fire, smoke and security performance, giving you confidence that our doorsets conform to building regulations.

The doorsets are available in a variety of designs and colour finishes to complement our internal doorset range and other JELD-WEN doors in the project.

**PRODUCT FEATURES:**

- Made to measure options available to suit the specific requirements of your project.
- Bidirectionally fire tested including glazed screens with all hardware and glazing options.
- Glazing options include insulated and non insulated glass solutions.
- A wide range of high quality hardware options available, see page 29 for details.

**DOOR COLOUR OPTIONS AVAILABLE**

Moulded and paint grade doors are available in a range of standard colours or choose your own RAL colour (subject to MOQ).

		
Dark Red RAL 3001	Sapphire Blue RAL 5003	Forest Green RAL 6028
		
Dusky Grey RAL 7037	Slate Grey RAL 7015	Black RAL 9017



All SecureSET™ doorsets are independently tested and certified through the BWF Certifire and Certisecure schemes



Meets the requirements of PAS 24 and Secured By Design

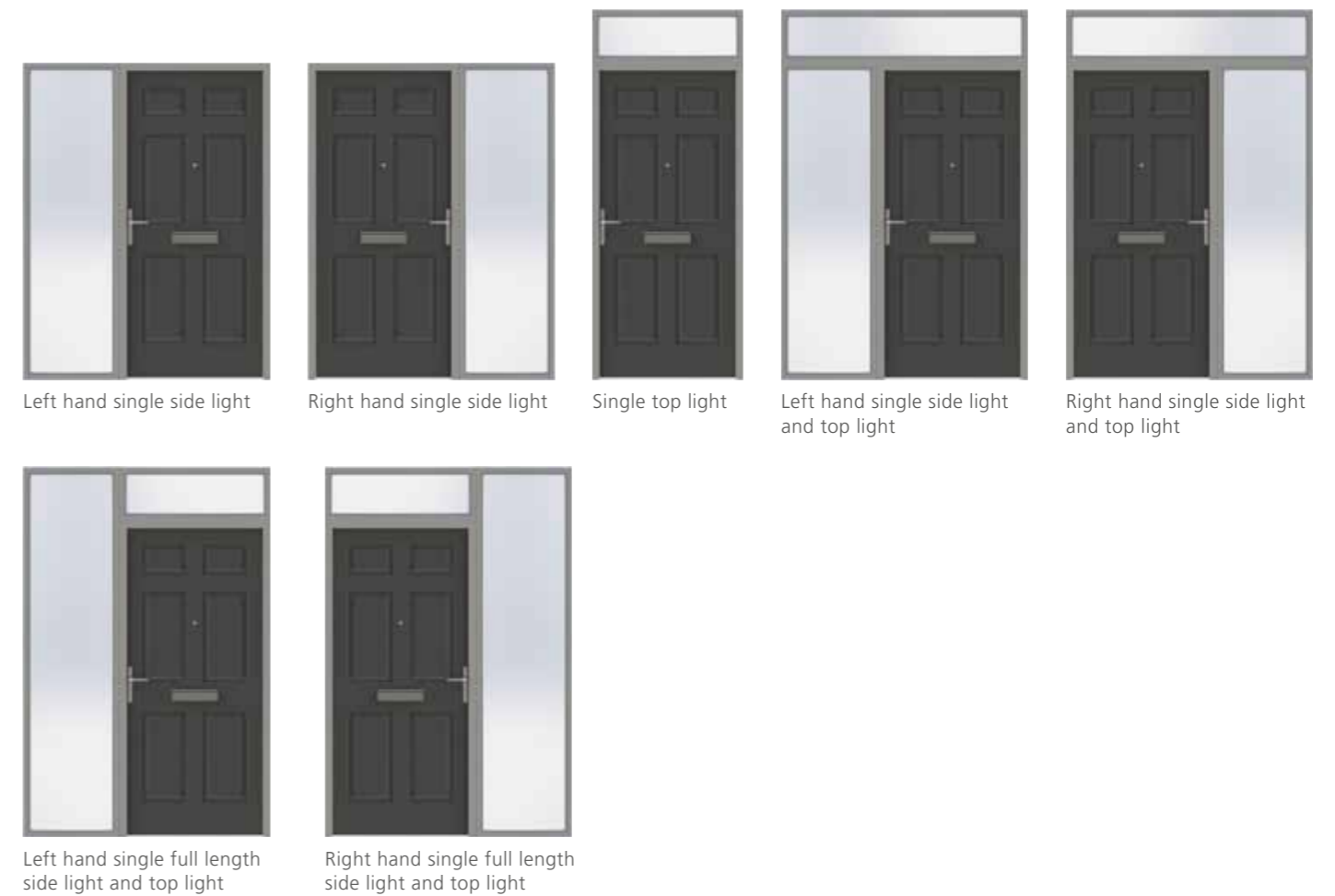




## STANDARD SPECIFICATION

- 1 HANDLE & CYLINDER**  
A satin silver handle and 3 star cylinder with thumb-turn.
- 2 HINGES**  
Three grade 13 fire & security rated hinges, in a choice of satin silver, polished silver or gold.
- 3 DROP DOWN SEAL**  
Concealed drop down seal.
- 4 COMBINED INTUMESCENT, SMOKE & ACOUSTIC PERIMETER SEALS**
- 5 MULTI-POINT LOCK**  
Multi-point hook lock.
- 6 SECURITY CHAIN**
- 7 VIEWER**  
Silver wide angled door viewer.
- 8 DOOR DESIGN**  
Choose a Moulded, Paint grade premium or laminate finish.
- 9 ALUMINIUM THRESHOLD PLATE**  
(10mm or 5mm option)
- 10 DOOR DATA PIN**

For a full list of hardware options, see page 29



## TOP AND SIDE LIGHT CONFIGURATIONS

30 minute fire rated and PAS24 approved side and top lights are available in multiple designs including full height light configurations to cater for your project requirements.

### GLASS SPECIFICATION:

Side lights are supplied as modular units, complete with E130 glass (fire integrity, insulated and laminated) to help limit heat radiation to the escape route in the event of a fire and ensure a high level of security performance in line with building regulations.

Top light units are supplied as modular units with EW30 glass (fire integrity and laminated) as standard, which has been proven to meet the requirements for both fire and security performance. E130 glass is optional.

All modular glazed units have been specially designed for easy removal of glass during installation. Glazed units are supplied partially glazed, with accompanying security screws and pre-piloted glazing beads for a quick and easy final fit.

Our modular doorset & glazed units are supplied with all the fixings required to complete the installation on site (excl. wall fixings).

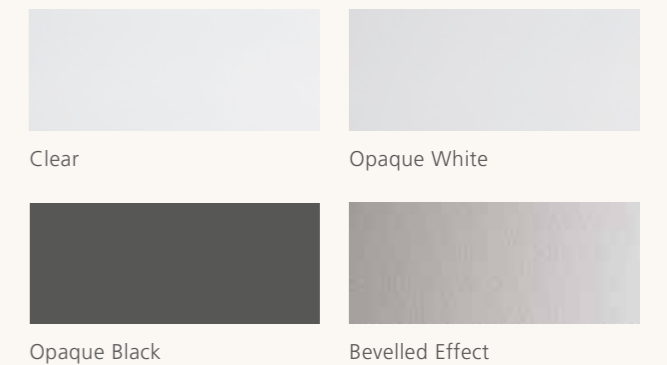


## GLAZING FINISH OPTIONS

Glazed units are available in Clear, Opaque, Block Colour and Bevelled effect designs (Bevelled effect glass only available in E130 glass options).

Side light units with a mid rail can have a combination of glazing finish options to suit your requirements.

Block colour options are available on request in a wider range of colour finishes to meet the requirements of your project.



### DID YOU KNOW?

In accordance to Building Regulations, the glass in a side light between a dwelling and an escape route is required to be insulated to aid the safe evacuation in the event of a fire. Further guidance can be found in Approved Document B.



# DOOR DESIGNS

## MOULDED PANEL



Bostonian ● Oakfield ● Arlington ● Atherton ● Cambridge ● Camden ● Rockport® ●

## REAL WOOD VENEER

### SELECTION RANGE



Linea ● Newark ● Ladder ● FUSION White Oak ● FUSION Walnut ● INLAY White Oak

### STANDARD RANGE



Ash ● Walnut ●

### MATCHED RANGE



White Oak ● Walnut ●

## PAINT GRADE



Paint Grade Premium

## LAMINATE (Up to 100 laminates available)



Chene des Massifs ● Blanc Artic ● Noyer Tropical ● Gris Tourterelle ● Cathedral Oak ● Gris Halo ● Banian Noirci

## CHOOSE FROM 100 DIFFERENT LAMINATE FINISHES



We have an extended range of up to 100 laminate finishes including different woodgrains, patterns and colours.

- ✓ DURABLE
- ✓ SCRATCH RESISTANT
- ✓ EASY TO CLEAN
- ✓ HYGIENIC SURFACES



Please visit [www.jeld-wen.co.uk/laminates](http://www.jeld-wen.co.uk/laminates) for more information.

## DOOR DESIGNS

**MOULDED GLAZED FIRE** \*Please speak with your account manager to discuss available options.



1 Side Mid/Lower (Lock Side)

1T (Lock Side)

1 Side Full (Lock Side)

1T Full Height (Lock Side)

2T

## FLUSH GLAZED DOORSET DESIGNS



GC01

GC04

GC05

GC06

GC07

GC08



GC09

GC10

GC11

GC12

GC13

GC14





# AVAILABLE PRODUCT RANGE

		INTERNAL DOORSETS											
		PANEL						PAIR					
		UNGLAZED			GLAZED			UNGLAZED			GLAZED		
Range	Skin	NFR	FD30	FD60	NFR	FD30	FD60	NFR	FD30	FD60	NFR	FD30	FD60
MOULDED	Bostonian	✓	✓	✓	⊘	⊘	⊘	✓	✓	⊘	⊘	⊘	⊘
	Oakfield	✓	✓	✓	⊘	⊘	⊘	✓	✓	⊘	⊘	⊘	⊘
	Arlington	✓	✓	✓	⊘	⊘	⊘	✓	✓	⊘	⊘	⊘	⊘
	Atherton	✓	✓	✓	⊘	⊘	⊘	✓	✓	⊘	⊘	⊘	⊘
	Cambridge	✓	✓	✓	⊘	⊘	⊘	✓	✓	⊘	⊘	⊘	⊘
	Camden	✓	✓	✓	⊘	⊘	⊘	✓	✓	⊘	⊘	⊘	⊘
	Rockport	✓	✓	✓	⊘	⊘	⊘	✓	✓	⊘	⊘	⊘	⊘
	Linea	✓	✓	✓	⊘	⊘	⊘	✓	✓	⊘	⊘	⊘	⊘
	Newark	✓	✓	✓	⊘	⊘	⊘	✓	✓	⊘	⊘	⊘	⊘
	Ladder	✓	✓	✓	⊘	⊘	⊘	✓	✓	⊘	⊘	⊘	⊘
LAMINATE	Laminate	✓	✓	✓	⊘	✓	✓	✓	✓	✓	⊘	✓	✓
PAINT GRADE	Paint grade premium	✓	✓	✓	⊘	✓	✓	✓	✓	⊘	⊘	✓	⊘

KEY	
NFR	Non fire rated
✓	Available to order
⊘	Not available

COMMUNAL DOORSETS												FED
PANEL						PAIR						
UNGLAZED			GLAZED			UNGLAZED			GLAZED			
NFR	FD30	FD60	NFR	FD30	FD60	NFR	FD30	FD60	NFR	FD30	FD60	FD30
✓	✓	✓	⊘	⊘	⊘	✓	✓	⊘	⊘	⊘	⊘	✓
✓	✓	✓	⊘	⊘	⊘	✓	✓	⊘	⊘	⊘	⊘	✓
✓	✓	✓	⊘	⊘	⊘	✓	✓	⊘	⊘	⊘	⊘	✓
✓	✓	✓	⊘	⊘	⊘	✓	✓	⊘	⊘	⊘	⊘	✓
✓	✓	✓	⊘	⊘	⊘	✓	✓	⊘	⊘	⊘	⊘	✓
✓	✓	✓	⊘	⊘	⊘	✓	✓	⊘	⊘	⊘	⊘	✓
✓	✓	✓	⊘	⊘	⊘	✓	✓	⊘	⊘	⊘	⊘	✓
✓	✓	✓	⊘	⊘	⊘	✓	✓	⊘	⊘	⊘	⊘	✓
✓	✓	✓	⊘	⊘	⊘	✓	✓	⊘	⊘	⊘	⊘	✓
✓	✓	✓	⊘	✓	✓	✓	✓	✓	⊘	✓	✓	✓
✓	✓	✓	⊘	✓	✓	✓	✓	⊘	⊘	✓	⊘	✓

# HARDWARE

## HINGES



1

## HANDLES & KNOBS



4



5



6



7



8



9



10



11



12



13



14



15



16



17



18



19



20



21



22

- 1 GRADE 10 HINGES, (Bright nickel, satin, matt black or matt brass)
- 2 NICKEL LATCH & KEEP
- 3 BATH LATCH & KEEP
- 4 NERA LEVER HANDLE (Satin)
- 5 CARLTON LEVER HANDLE (Satin)
- 6 PLAZA LEVER HANDLE (Satin)
- 7 SPIRA LEVER HANDLE (Satin)
- 8 TREVIRI LEVER HANDLE (Satin)

- 9 CURVED LEVER HANDLE (Satin)
- 10 PHILADELPHIA LEVER HANDLE (Satin)
- 11 TOLEDO LEVER HANDLE (Matt black)
- 12 TOLEDO LEVER HANDLE (Satin chrome)
- 13 TOLEDO LEVER HANDLE (Polished chrome)
- 14 LEON LEVER HANDLE (Matt black)
- 15 LEON LEVER HANDLE (Satin chrome)
- 16 LEON LEVER HANDLE (Polished chrome)

- 17 BILBAO LEVER HANDLE (Matt black)
- 18 BILBAO LEVER HANDLE (Satin chrome)
- 19 BILBAO LEVER HANDLE (Polished chrome)
- 20 TURN & RELEASE (Satin) – with/without indicator pack
- 21 DISABILITY TURN & RELEASE (Satin) – with/without indicator pack
- 22 DATA PIN

## LATCHES



2



3

## HINGES



1



## LOCKS, CYLINDERS & ESCUTCHEON



2



3



4



5



6



7



8



9



10



11



12

## HANDLES, PUSH & KICK PLATES



13



14



15



16



17

## OTHER

- 1 GRADE 13 HINGES (Polished or satin)
- 2 DIN LATCH – 55mm Backset
- 3 DIN EURO SASH LOCK – 55mm Backset
- 4 DIN EURO DEAD LOCK – 60mm Backset
- 5 KEY / KEY EURO CYLINDER (Satin)
- 6 KEY / THUMB EURO CYLINDER (Satin)
- 7 KEY HALF EURO CYLINDER (Satin)
- 8 EURO CYLINDER ESCUTCHEON
- 9 FB2 LOCK

- 10 DIGIT CODE LOCK
- 11 EURO CYLINDER FINGER PULL (Satin)
- 12 300mm BAR PULL HANDLE (Satin)
- 13 350mm FINGER PUSH PLATE
- 14 150mm KICK PLATE (Satin)
- 15 LEVER ACTION FD30 FLUSH BOLT
- 16 OVERHEAD SURFACE MOUNTED CLOSER
- 17 DATA PIN



# HARDWARE

## HINGES



1

## LOCKS



2



3



4

## HANDLES



5

## OTHER



6



7



8



9



10



11



12

- 1 GRADE 13 HINGES (Polished or satin)
- 2 MULTI-POINT LOCK
- 3 1\* TS007 KEY/THUMB CYLINDER
- 4 1\* TS007 KEY/KEY CYLINDER
- 5 2\* TS007 SECURITY HANDLE – (Polished or satin)
- 6 SECURITY CHAIN

- 7 SPY VIEWER
- 8 ACOUSTIC DROP DOWN SEAL
- 9 TS008 SECURITY LETTER PLATE (Polished or Satin)
- 10 SURFACE MOUNTED OVERHEAD CLOSER
- 11 ALUMINIUM THRESHOLD PLATE (FD30 only)
- 12 DATA PIN

## INTUMESCENT OPTIONS ACROSS ALL DOORSETS



INTUMESCENT, SMOKE SEAL, ACOUSTIC & WEATHER STRIP (with softwood doorset)



INTUMESCENT & SMOKE SEAL (with FD60 hardwood doorset)

## HINGES



1

## LOCKS



2



3



4

## HANDLES



5

## OTHER



6



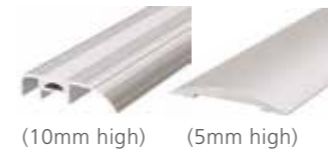
7



8



9



10

(5mm high)



11



12



13

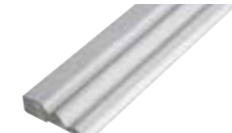


14

- 1 GRADE 13 HINGES (Polished or satin)
- 2 MULTI-POINT LOCK – 3 HOOK POINTS
- 3 3\* TS007 SECURITY CYLINDER (Key/Thumb)
- 4 3\* TS007 SECURITY CYLINDER (Key/Key)
- 5 BALMORAL LEVER HANDLES (Polished or satin)
- 6 SPY VIEWER
- 7 SECURITY CHAIN

- 8 ACOUSTIC DROP DOWN SEAL
- 9 TS008 SECURITY LETTER PLATE (Polished or satin)
- 10 ALUMINIUM THRESHOLD PLATE (10mm or 5mm option)
- 11 FD30 SURFACE MOUNTED OVERHEAD CLOSER
- 12 FD30 CONCEALED OVERHEAD CLOSER
- 13 CONTEMPORARY DOOR KNOCKER (Polished)
- 14 DATA PIN

## ARCHITRAVE OPTIONS ACROSS ALL DOORSETS



OGEE (50 & 69mm)



TORUS (59mm)



TWICE ROUNDED (47 & 69mm)



OVOLO (69mm)





# SIZING A DOORSET

## INTERNAL DOORSET STRUCTURAL & CLEAR OPENING SIZES

Door Leaf Size Imperial / Metric		Overall Doorset Size (mm)				Structural Opening Size* (mm)				Clear Opening Width (mm)		
Height	Width	MDF NFR / FD30 16mm Std. undercut		Hardwood FD60 19mm Std. undercut		MDF NFR / FD30		Hardwood FD60		MDF NFR	MDF FD30	Hwd FD60
		1981mm (6'6")	457mm (1'6")	2025	513	2045	547	2030	523	2050	557	400
1981mm (6'6")	533mm (1'9")	2025	589	2045	623	2030	599	2050	633	476	467	457
1981mm (6'6")	610mm (2'0")	2025	666	2045	700	2030	676	2050	710	553	544	534
1981mm (6'6")	686mm (2'3")	2025	742	2045	776	2030	752	2050	786	629	620	610
1981mm (6'6")	762mm (2'6")	2025	818	2045	852	2030	828	2050	862	705	696	686
1981mm (6'6")	838mm (2'9")	2025	894	2045	928	2030	904	2050	938	781	772	762
1981mm (6'6")	864mm (2'10")	2025	920	2045	954	2030	930	2050	964	807	798	788
1981mm (6'6")	914mm (3'0")	2025	970	2045	1004	2030	980	2050	1014	857	848	838
Metric 2040mm	526mm	2084	582	2104	616	2089	592	2109	626	469	460	450
Metric 2040mm	626mm	2084	682	2104	716	2089	692	2109	726	569	560	550
Metric 2040mm	726mm	2084	782	2104	816	2089	792	2109	826	669	660	650
Metric 2040mm	826mm	2084	882	2104	916	2089	892	2109	926	769	760	750
Metric 2040mm	926mm	2084	982	2104	1016	2089	992	2109	1026	869	860	850
1981mm (6'6")	1066mm (3'6" Pair)	2025	1125	2045	1159	2030	1135	2050	1169	975	957	-
1981mm (6'6")	1168mm (3'10" Pair)	2025	1227	2045	1261	2030	1237	2050	1271	1077	1059	-
1981mm (6'6")	1220mm (4'0" Pair)	2025	1279	2045	1313	2030	1289	2050	1323	1129	1111	-
1981mm (6'6")	1372mm (4'6" Pair)	2025	1431	2045	1465	2030	1441	2050	1475	1281	1263	-
1981mm (6'6")	1512mm (5'0" Pair)	2025	1571	2045	1605	2030	1581	2050	1615	1421	1403	-

\*Note: Structural opening sizes include a 10mm width and 5mm height fitting tolerance.

App Doc M = BUILDING REGULATIONS Approved document M.



## INTERNAL & COMMUNAL DOORSET GLAZING SPECIFICATIONS

Aperture	App Doc K	Actual visible glass area (mm) WxH	Top margin (mm)	Side margin (mm)	Distance between beads (mm)
	GC				
GC01	⊘	427x427	140.5	Central	-
GC04	⊘	120x730	140.5	140.5	-
GC05	✓	120x730 & 150x450	140.5	140.5	206
GC06	✓	120x1380	140.5	140.5	-
GC07	✓	60x1670	140.5	Central	81
GC08	⊘	195x195	140.5	Central	101
GC09	✓	427x1670	140.5	Central	-
GC10	⊘	480x885	140.5	Central	-
GC11	✓	120x1120	400.5	140.5	-
GC12	⊘	120x885	140.5	140.5	-
GC13	✓	378x240	195.5	Central	111
GC14	⊘	240x378	190.5	Central	131

Requirement 6 of Approved Doc K does not apply to dwellings.

GC = Clear glass.

## FED STRUCTURAL & CLEAR OPENING SIZES

Door Leaf Size Imperial / Metric		Overall Doorset Size (mm)		Structural Opening Size (mm)		Clear Opening Width (mm)
Height	Width	FD30 44mm (Swd Frame) 19mm Std. undercut		FD30 44mm (Swd Frame)		FD30 44mm
		Height	Width	Height	Width	
1981mm (6'6")	838mm (2'9")	2046	930	2051	940	772
1981mm (6'6")	864mm (2'10")	2046	956	2051	966	798
1981mm (6'6")	914mm (3'0")	2046	1006	2051	1016	848
Metric 2040mm	926mm	2105	1018	2110	1028	860

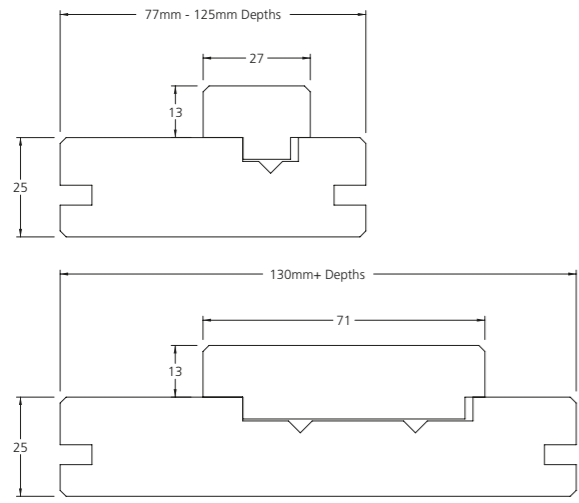
## FED + TOP & SIDE LIGHT STRUCTURAL & CLEAR OPENING SIZES

Door Leaf Size Imperial / Metric		Overall Doorset Size (mm)		Structural Opening Size* (mm)		Clear Opening Width (mm)
Height	Width	FD30 44mm 16mm Std. undercut		FD30 44mm		FD30 44mm
		Height	Width	Height	Width	
1981mm (6'6")	762mm (2'6")	2032	832	2037	842	689
1981mm (6'6")	838mm (2'9")	2032	908	2037	918	765
1981mm (6'6")	864mm (2'10")	2032	934	2037	944	791
1981mm (6'6")	914mm (3'0")	2032	984	2037	994	841
Metric 2040mm	826mm	2091	896	2096	906	753
Metric 2040mm	926mm	2091	996	2096	1006	853

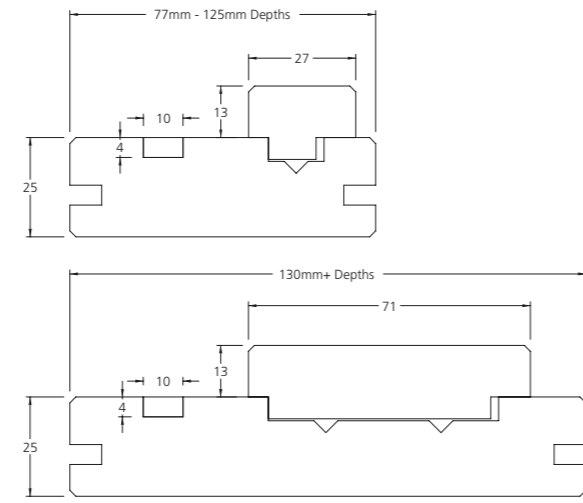
\*Recommended structural opening sizes allows for a 5mm frame to wall gap, to be filled in accordance to the guidance contained within BS 8214. Larger frame to wall gaps may be permissible, providing that the guidance contained within the BS 8214 standard is followed.

# DOORSET LININGS

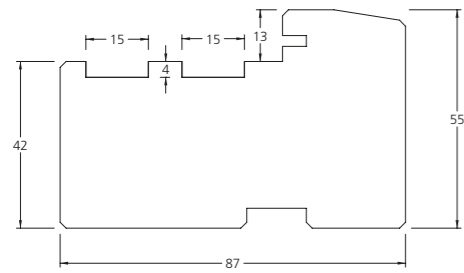
## NON FIRE RATED INTERNAL DOORSET LINING



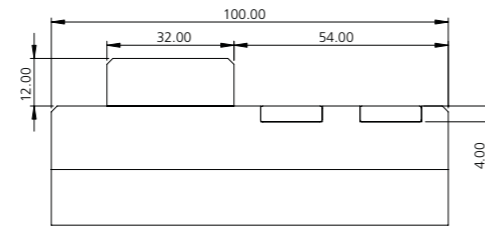
## FD30 INTERNAL DOORSET LINING



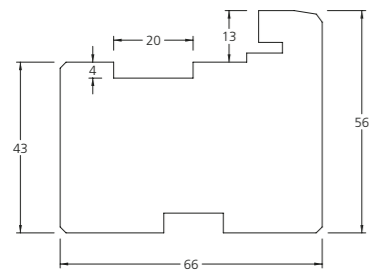
## FD60 INTERNAL DOORSET LINING



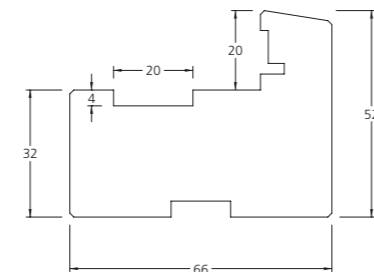
## FD60 PAIR INTERNAL DOORSET LINING



## FD30 FED FRAME



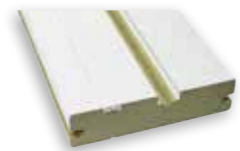
## FD30 FED + LIGHT FRAME



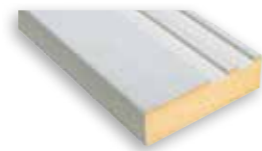
## LINING OPTIONS FOR ALL INTERNAL DOORSETS



25mm MDF lining & adjustable stop



25mm FD30 MDF lining, adjustable stop & intumescent strip



30mm FD60 MDF Lining, adjustable stop & intumescent strip







**JELD WEN.**

INTERIOR DOORSETS  
0345 122 2891  
ukdoorsets@jeldwen.com

SEE MORE AT  
[JELD-WEN.CO.UK](http://JELD-WEN.CO.UK)