

# FITTING INSTRUCTIONS SINGLE LEAF COMMUNAL INTERNAL DOORSET



**CAUTION SAFETY NOTE:** This product needs to be installed by a competent trades-person with assistance. Two people are required to carry out the installation, as some components are heavy. The opening **MUST** be capable of carrying the load of the doorset in all conditions.

**PLEASE NOTE:** Prior to installing this doorset, inspect for damage and do not proceed to fit if any damage or defect is evident. This doorset should be stored in a dry flat location before installation.

**Note** – All the parts you need are included in the pack. Check for any defects or missing items before you start to assemble.

## TOOLS REQUIRED:

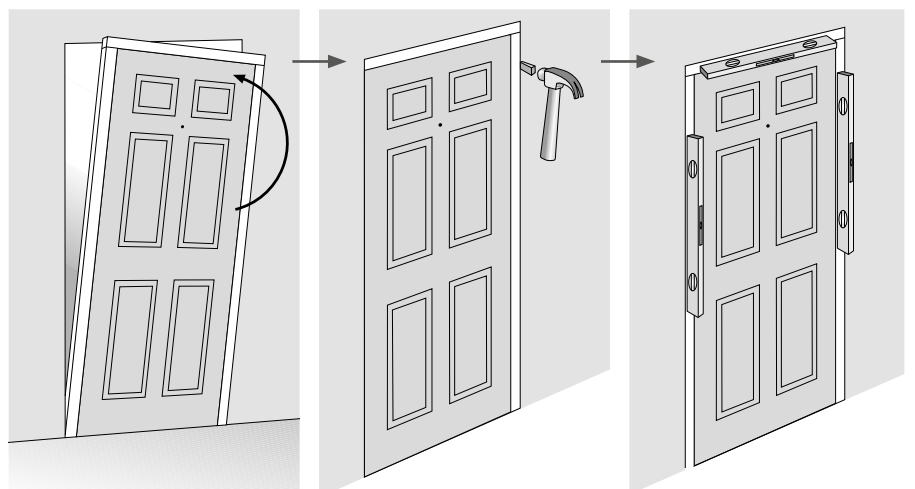
Tape measure, spirit level, screwdriver, drill and saw.

## PRE-INSTALL CHECK

- Measure the width and height of the opening. It should be a minimum of 10mm wider and 5mm higher than the overall doorset size.
- Before you start the fitting, ensure the floor is level. Unscrew the bottom brace.

## INSTALLING THE DOORSET

1. Place the doorset into the structural opening, using packers as required to ensure the frame is level, plumb and square.
2. Carefully remove the weather strip from the jambs. Between the intumescent strip and fixed rebate drill and countersink at least four holes spaced 100mm from the top and bottom of the jamb, with no more than 600mm centres between each fixing, avoiding the hinges and keep pockets.
3. Fix the hinge side jamb to the opening ensuring the screw penetrates the surrounding structure by at least 50mm. Use packers as required.
4. Repeat the process on the other side and fix the latch side door frame to the opening.
5. Adjust the packers as required to ensure a 3-4 mm perimeter gap is maintained along the head and latch side jamb when the door is closed.



## INSTALLING THE DOORSET Continued...

6. Carefully replace the weather strip.
7. Apply the linear gap sealing as per BS8214 Regulations or in line with the certification document.

## INSTALL THE HARDWARE

8. Fit the handles, door closers and any other desired ironmongery.

### POST-INSTALLATION CHECK

Once the doorset has been securely fixed it should be checked for operation by opening and closing the door ensuring that it does not hit the frame at any point. It should be possible to secure the door by the latch with only a light pressure. If the operation is not smooth then the fixings should be loosened and the frame adjusted re-secured and checked once more.

**IMPORTANT: Any gaps between the frame and the wall must be filled using rockwool or another inert material.**



For video  
instructions,  
scan the  
QR code